

Which Benz and BMW vehicles are supported?

1. Benz models (18 types chassis):

S(222), S(221), C(205), C(204), V(W447), E(W212), E(W207), A(W176), G(W463), ML(W166), SL(R231), GL(X166), B(W246), CLS(W218), SLK(R172), SLS(W197), CLA(W117), GLK(X204)

2. BMW models:

BMW: CAS4/FEM Fxx

BMW 1 series F2X, 3 series F3X, BMW X5 etc., FEM mileage adjustment (no need to remove FEM, connect directly to instrument panel);

BMW 5 series F10, 7 series F01/02 etc., CAS4 Fxx chassis.(F01, F02, F07, F18, F10, F20, F25, X3 etc., applicable for 9S12 XEP series 5M48H/1N35H).

Note: For Mercedes-Benz before year 2014 and BMW E/F chassis odometer correction, they don't need MB CAN filter 18 in 1.

When to use Yanhua CAN Filter 18 in 1?

18 in 1 Benz/BMW Universal filter should be added to car after odometer adjustment for most chassis model, **EXCEPT** for W222/W205/W447, these 3 chassis models should add can filter before odometer adjustment.

How to connect Yanhua CAN Filter 18 in 1?

Mercedes-Benz CAN filter wiring diagram:

New style: 222/205/217

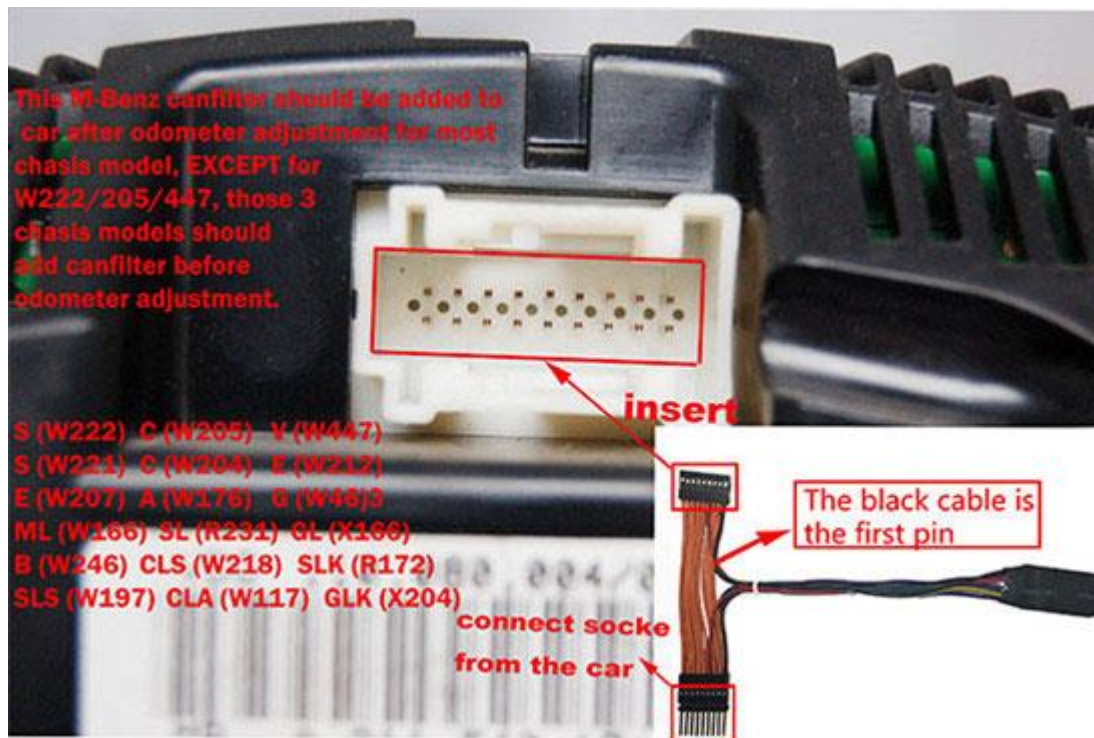
Old style: 166/212/463

Check the car model correctly before adjust.

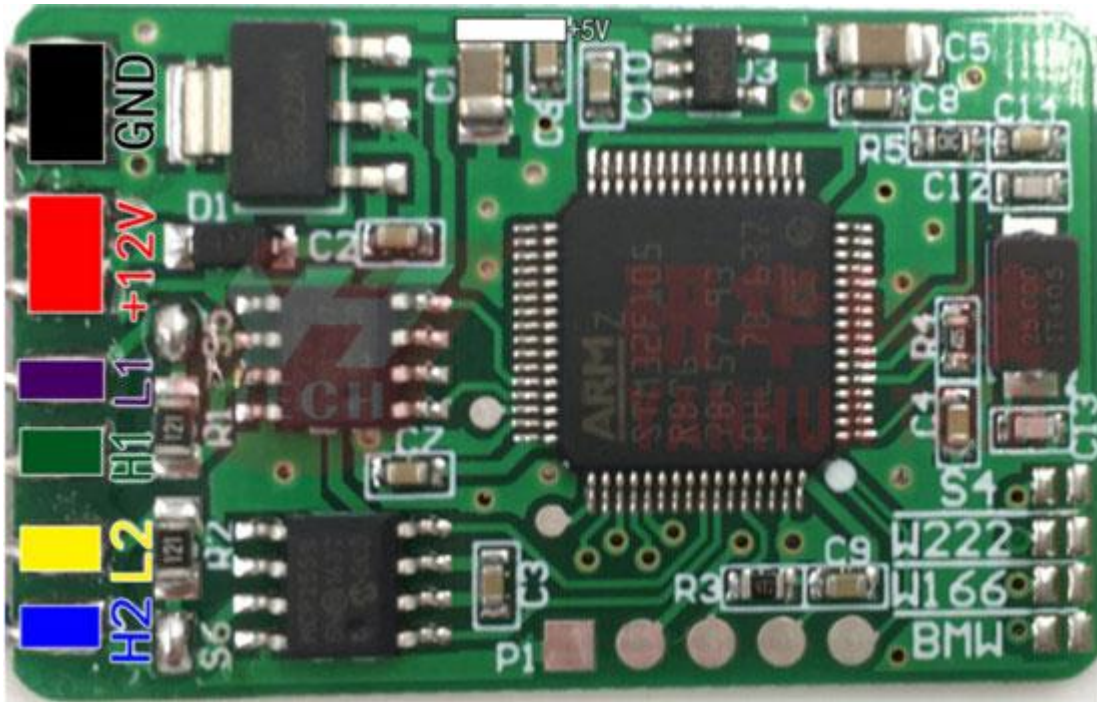
Old style W166 short circuit to GND

New style W222 short circuit to GND

Black wire connect to plug 1



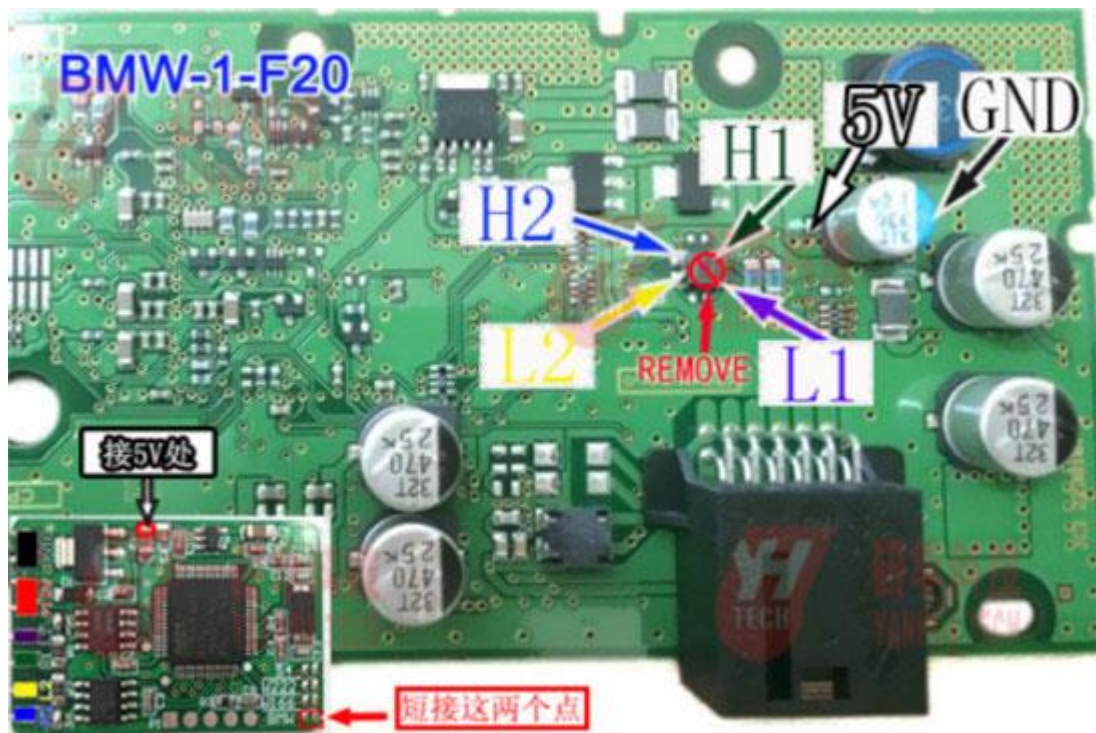
BMW CAN filter wiring diagram:



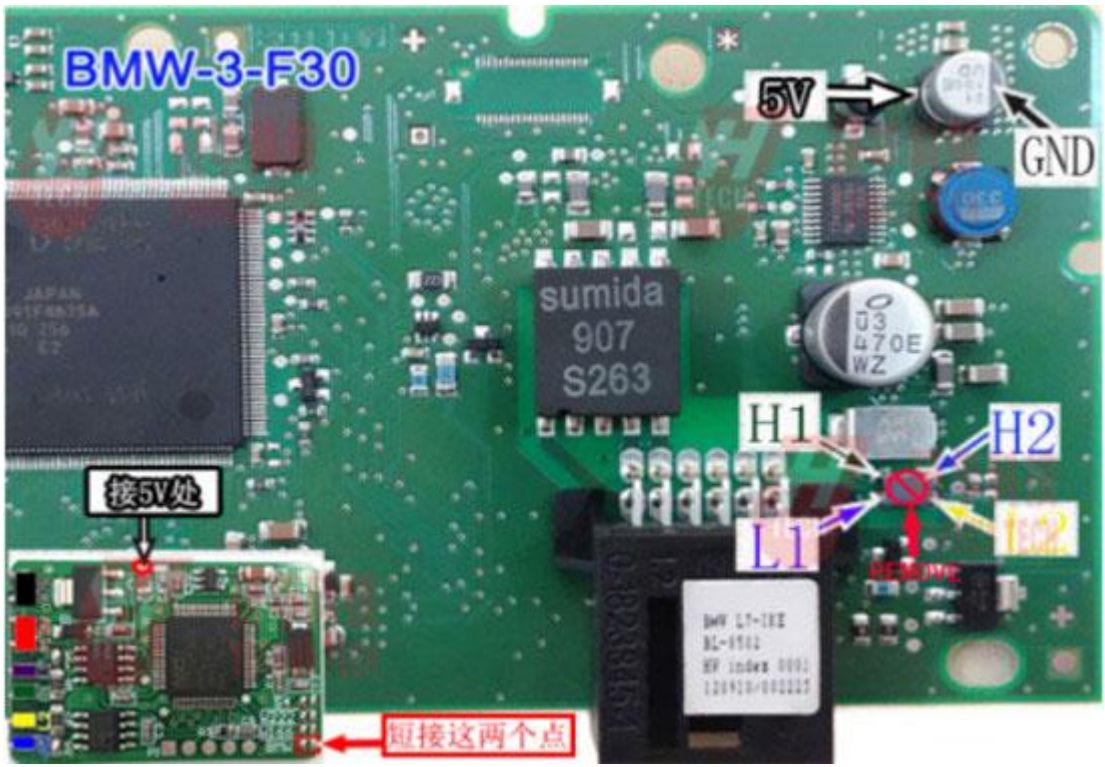
Black —— GND Red —— +12V White —— +5V
Purple —— L1(CAN_L1) Green —— H1(CAN_H1)
Yellow —— L2(CAN_L2) Blue —— H2(CAN_H1)

NOTICE! Please connect the 2 BMW dots together (short circuit) before connecting to the car!

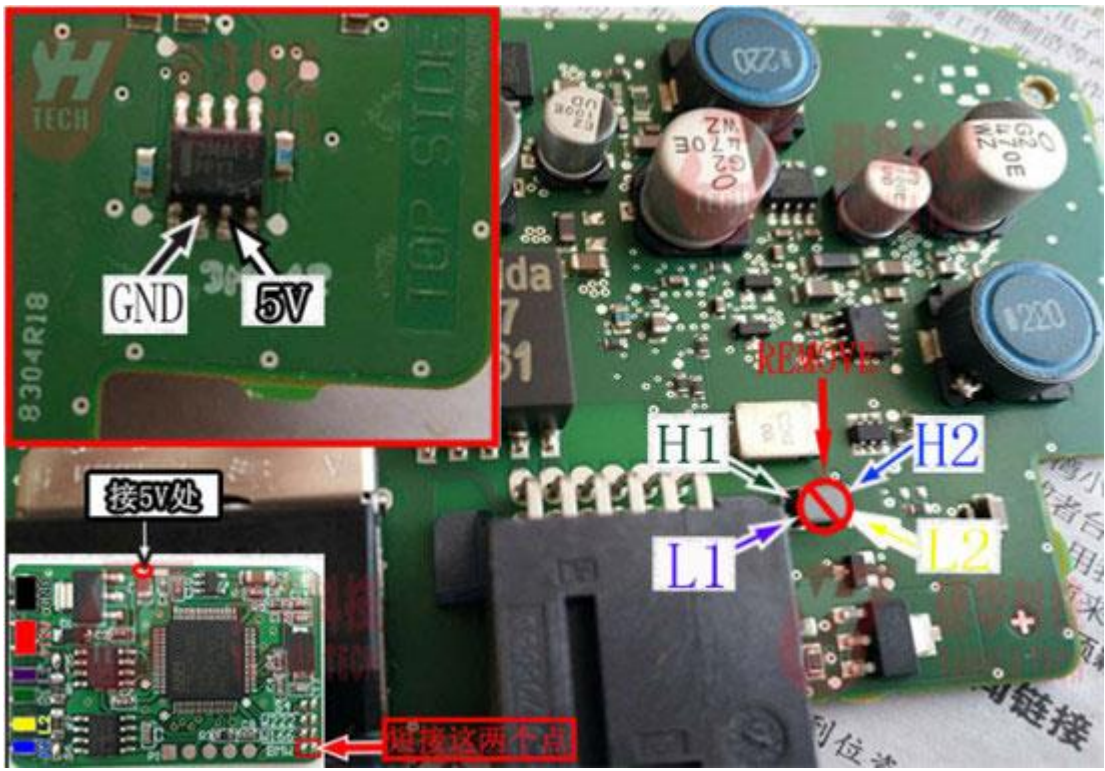
1. BMW 1 series F20 instrument diagram:



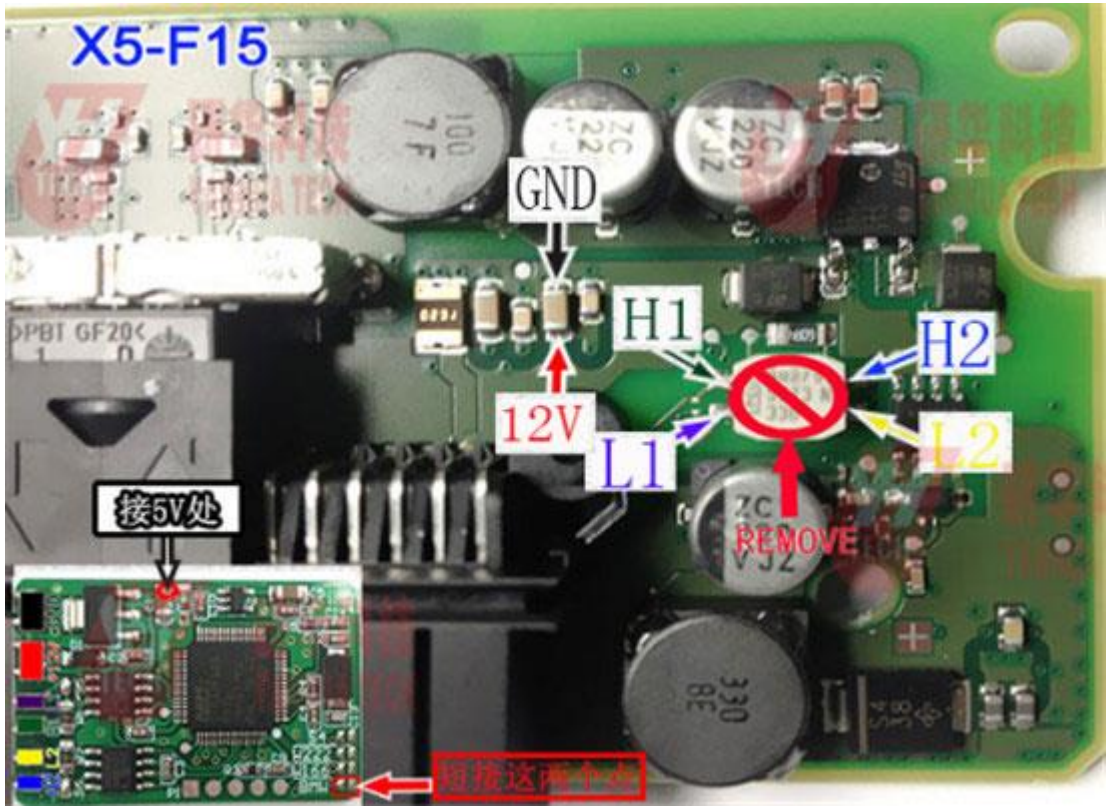
2. BMW 3 series F30 instrument diagram:



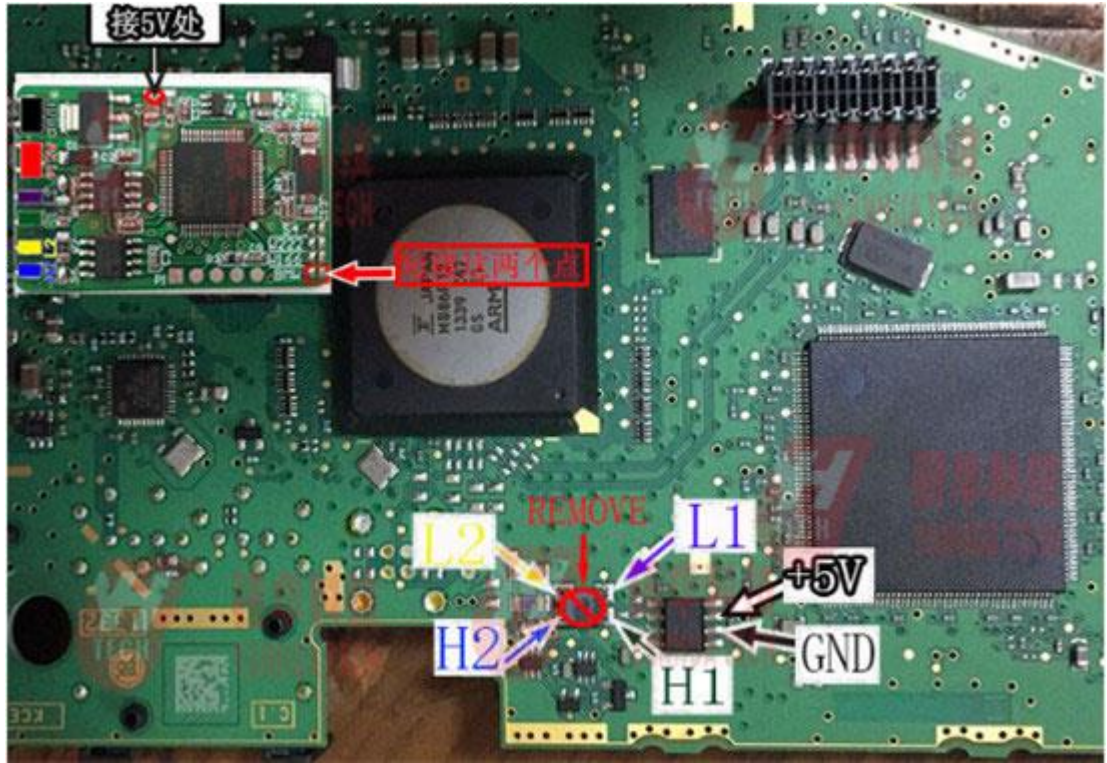
3. BMW 3 GT series F30 instrument diagram:



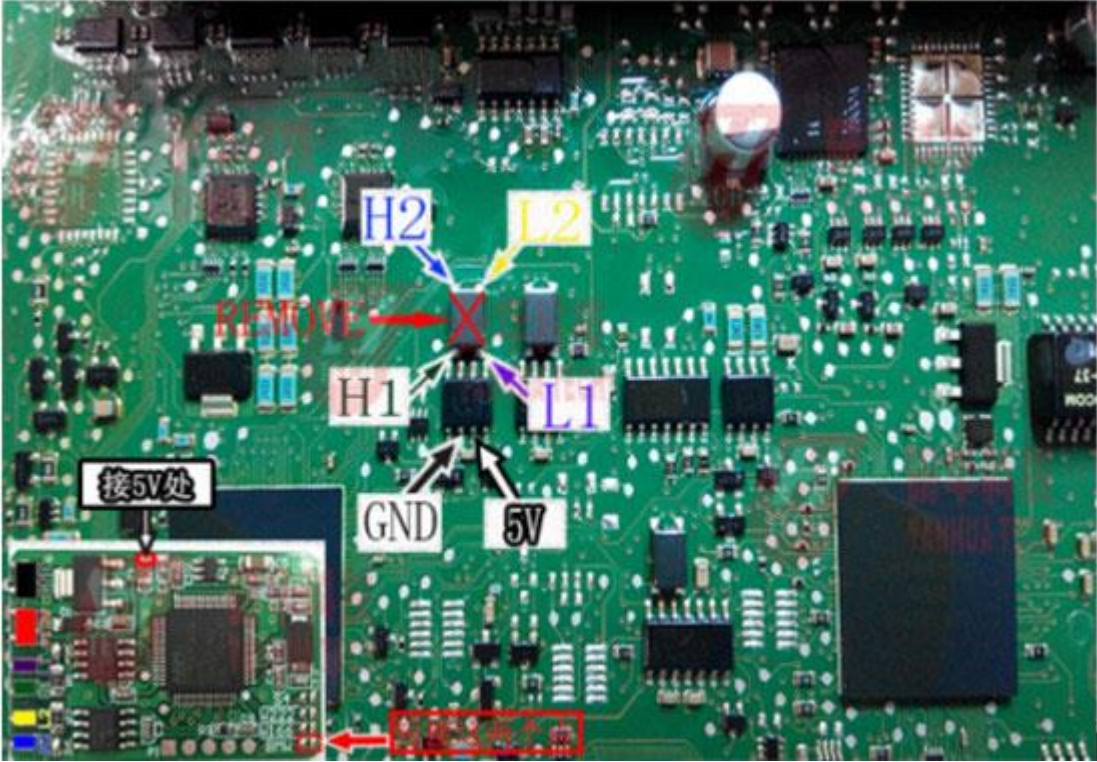
4. BMW X5 F15 instrument diagram:



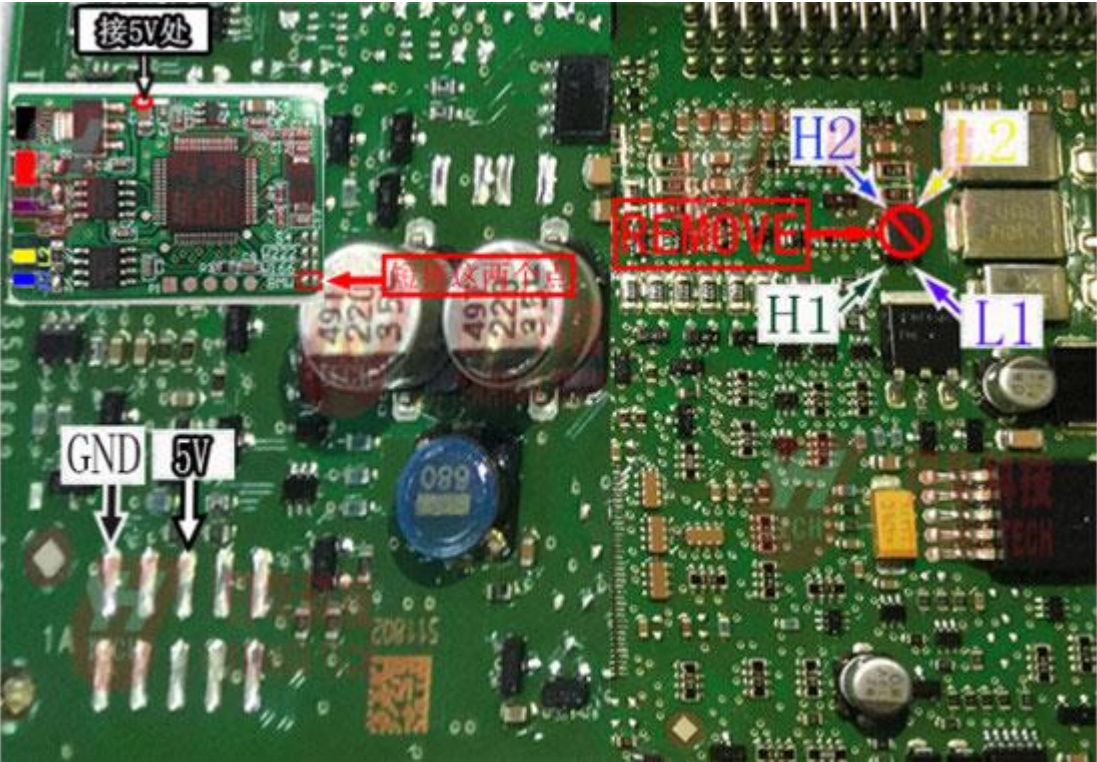
5. USA Standard BMW X5 F15 instrument diagram:



6. BMW FEM diagram:



7. BMW CAS4 (1L15Y/5M48H/1N35H) diagram:



8. BMW X3 F25 instrument diagram:

